

CHAPTER 7 EUKARYOTIC CELL ORGANELLES

- **MITOCHONRIA/POWERHOUSE/ATP.**
- **NUCLEAR MEMBRANE/COVER/PORE.**
- **NUCLEUS WITH DNA (GENES).**
- **NUCLEOLUS/m-RNA.**
- **ROUGH ER/TRANSPORT; SER.**
- **RIBOSOMES/TRANSLATION.**
- **GOLGI COMPLEX/ASSEMBLY OF PROTEINS.**

Figure 7.9 The nucleus and its envelope



Figure 7.17 The mitochondrion, site of cellular respiration

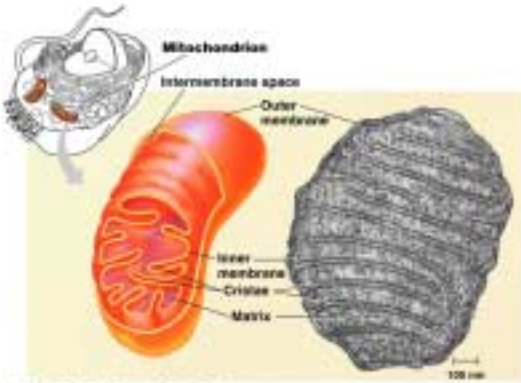


Figure 7.18 The chloroplast, site of photosynthesis

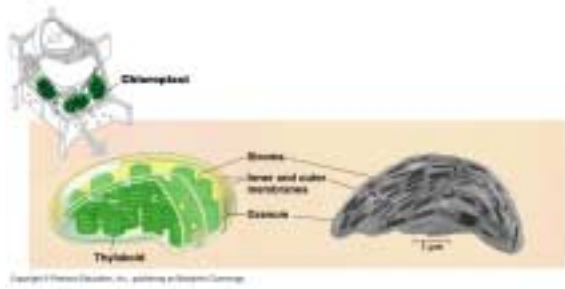


Figure 7.11 Endoplasmic reticulum (ER)

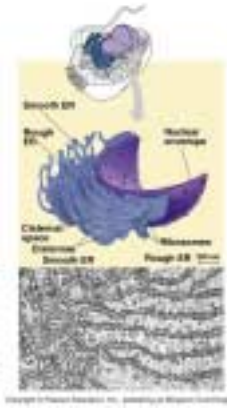


Figure 7.10 Ribosomes



Figure 7.12 The Golgi apparatus

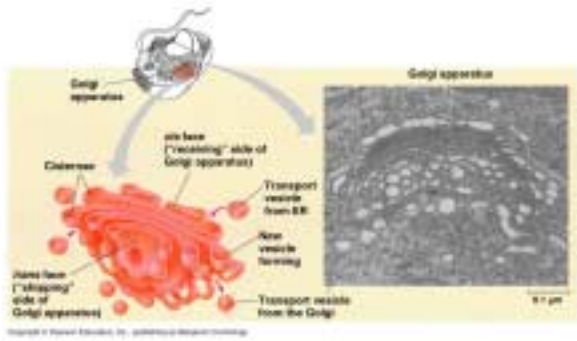
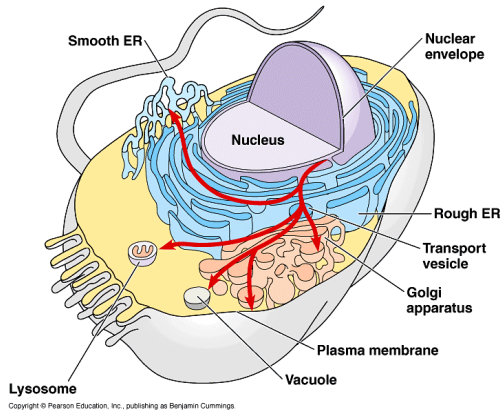


Figure 7.16 Review: relationships among organelles of the endomembrane system



MORE CELL ORGANELLES

- **LYSOSOMES/DEGRADATION.**
- **LYTIC ENZYMES**
- **CENTRIOLES/CELL DIVISION.**
- **VESICLES/TRANSPORT.**
- **MICROTUBULES/MICROFILAMENTS.**
- **CYTOSOL/CELL FLUID.**
- **PLASMA MEMBRANE/ENDO AND EXOCYTOSIS.**

Figure 7.13 Lysosomes

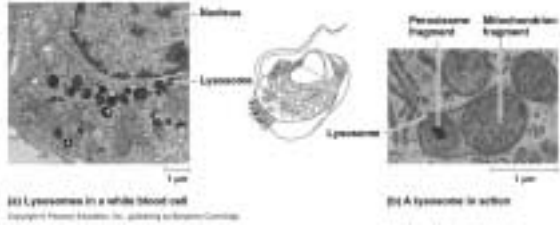


Figure 7.14 The formation and functions of lysosomes (Layer 3)

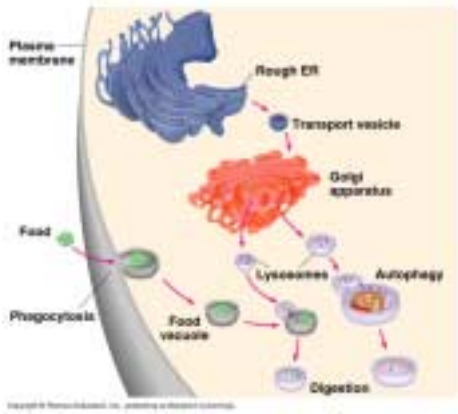


Figure 7.15 The plant cell vacuole

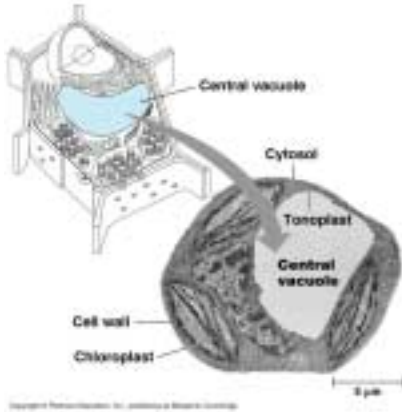


Figure 7.19 Peroxisomes

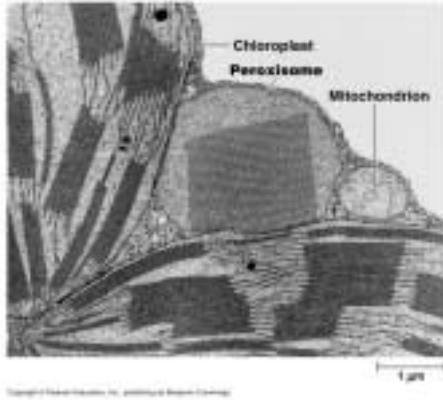


Figure 7.20 The cytoskeleton

